

Castings and Machining at Ahmedabad, India

CASTINGS



ITTI, LLC

Your Gateway to India for
CONTRACT MANUFACTURING AND JOINT VENTURES

80, Old Sandhurst Landing, Johns Creek, GA-30022 (USA)

Ph: +1 (678) 879 – 6379

Fax: +1 (866) 885 – 1077

E-mail: info@ittillc.com

web: www.ittillc.com

ITTI, LLC

Castings and Machining at Ahmedabad, India



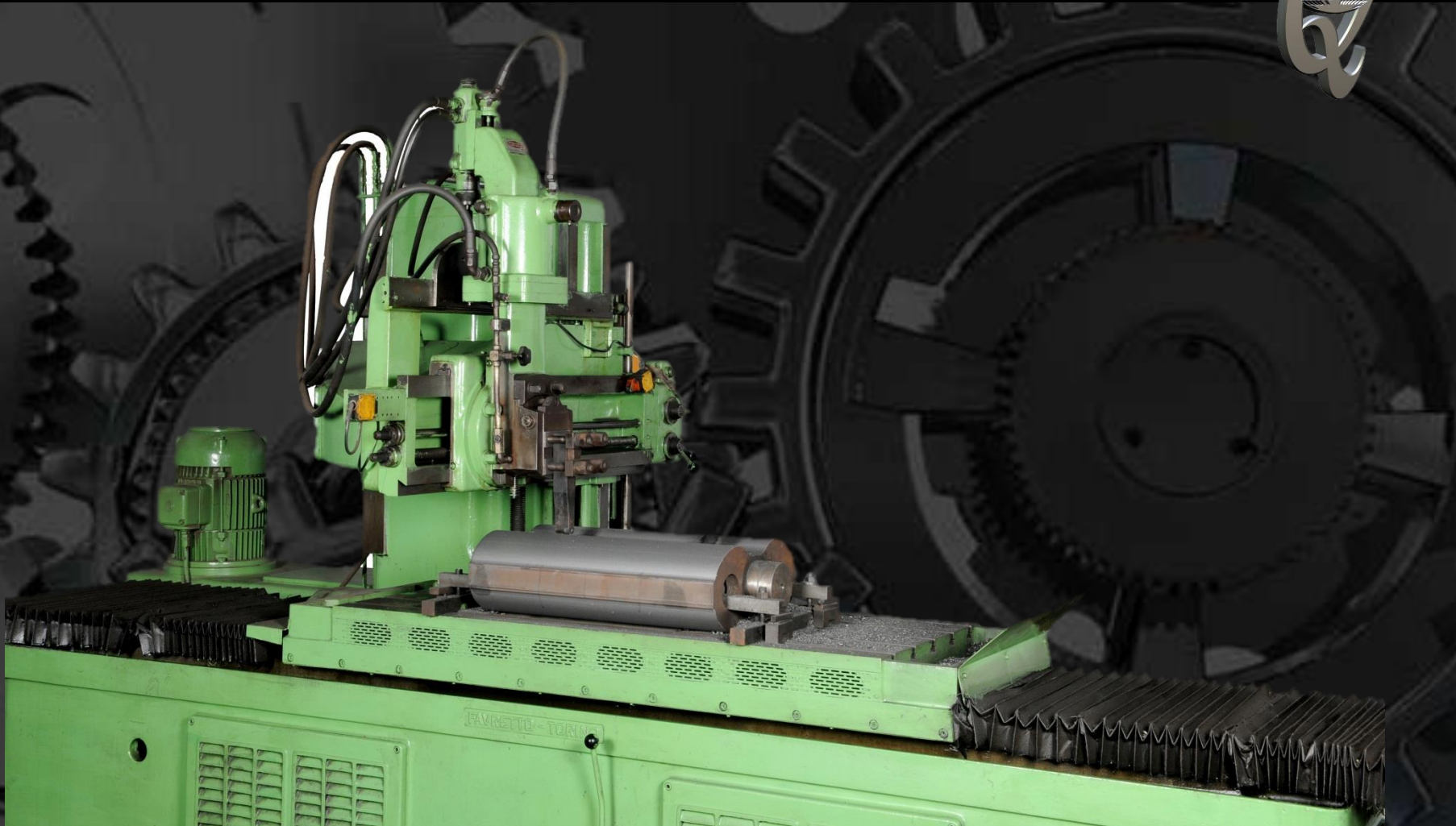
- ITTI established Casting and Machining Division in 2016 for designing and manufacturing precision components from all grades of Ferrous and Non-ferrous castings.
- **ITTI focuses on specialized molding and manufacturing processes for geometrically critical parts having very close tolerances of manufacturing.**
- ITTI offers one-stop-shop solution for your casting requirements. ITTI has the ability to manufacture and supply a range of Sand cast, Gravity cast, Investment cast, Steel cast and pressure die cast components using wide range of metals.
- **We have state of the art machinery, highly skilled work force and ISO 9001 Quality Management System with full participation by the entire management team including the CEO. The facility is housed in a sprawling 20500 Square foot building in India's most business friendly state of Gujarat in the city of Ahmedabad.**

ITTI, LLC

Castings and Machining at Ahmedabad, India



- Components ranging from 1 Kg to 1000 Kg can be cast and machined as per the customer specifications. We have three VMCs having 3-Axis and 4-Axis configurations. This enables to minimize the rejection rate due to manual errors.
- **The VMC operations are supported by dedicated CAD/CAM software like Power Shape, Power Mill, Solid Works and AutoCAD.**
- The Finished components can be custom painted if required with Epoxy based, PU based or NC based paints.
- **The components can be coated or plated with abrasion and corrosion resistant media.**
- The components can be supplied with Non destructive testing such as Radiography, Ultrasonic test, Liquid penetration test, Hydrostatic/Pneumatic pressure test as per requirement.
- **The Assemblies and sub-assemblies can also be supplied.**



Favretto Torino, Italian Make Hydro Copier Planing Machine

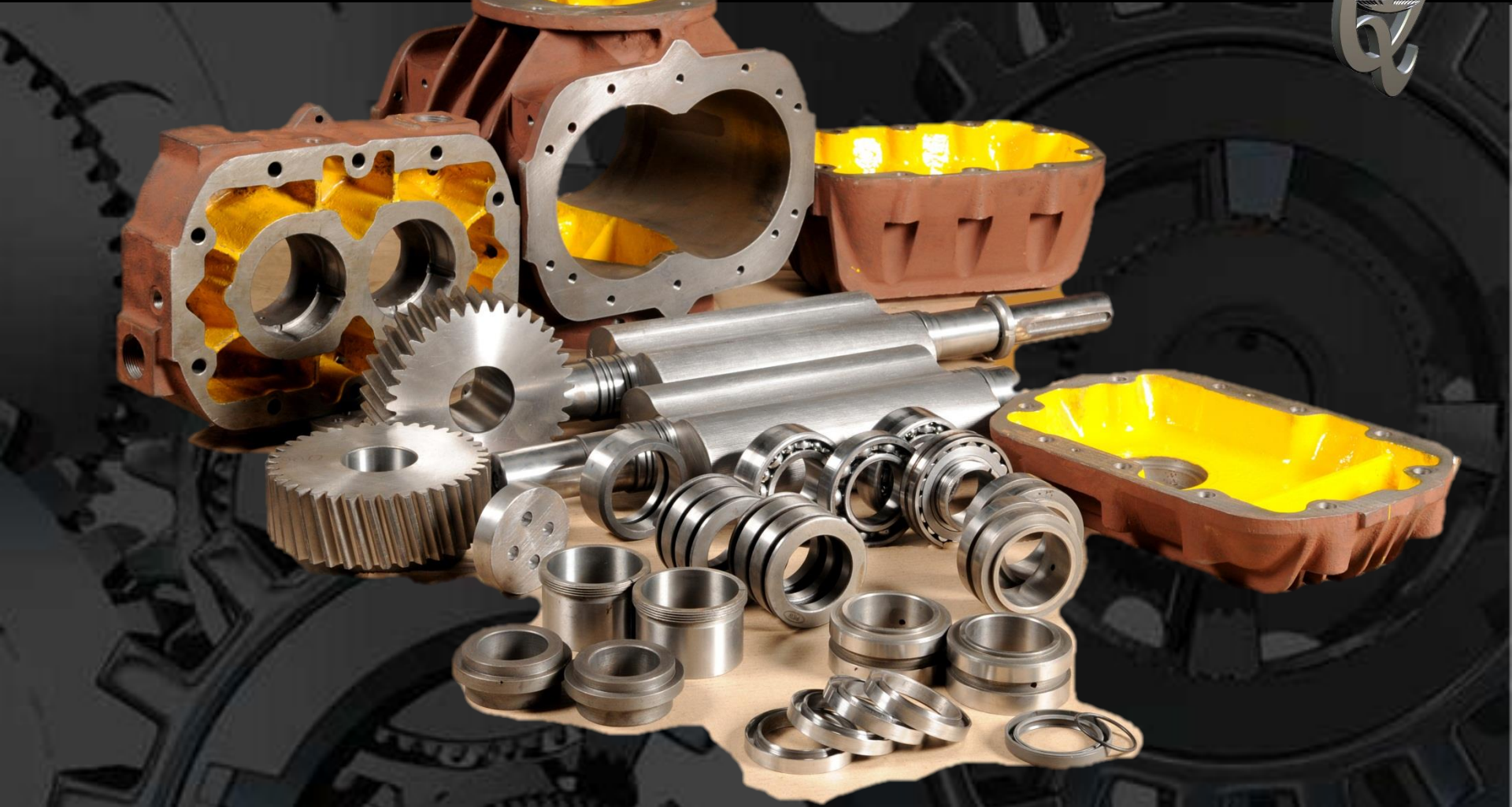


Jyoti , India make VMC with 4-Axis configuration



LIST OF MAJOR MACHINERY INSTALLED AT AHMEDABAD, INDIA.

SL. NO.	MACHINE ID.	DESCRIPTION	MAKE	RANGE / CAPACITY
1	700-1	Vertical Machining Centre Model: VMC-1050	Jyoti, India	Travel Distance X-1020 x Y-510 x Z-610
2	700-2	Vertical Machining Centre Model: VMC-850	Jyoti, India	Travel Distance X-820 x Y-510 x Z-510
3	700-3	Vertical Machining Centre Model: VMC-1260	Jyoti, Rajkot	Travel Distance X-1220 x Y-600 x Z-610
4	600-01	Hydraulic Press	Dowel	75 Tones Capacity, Stroke :- 20" Depth = 2.5 Met
5	500-02	Hydro Copier Planning M/c (20 HP & 5 HP Motor)	Favretto Torino	Bed Size 1500 X 650 mm
6	300-01	Horizontal Boring Machine	TOS	W-9 Spindle Ø 90
7	300-02	Horizontal Boring Machine	TOS	Spindle Ø 63
8	600-02	Vacuum Impregnation Machine	Parag	Vacuum 760 mmHg



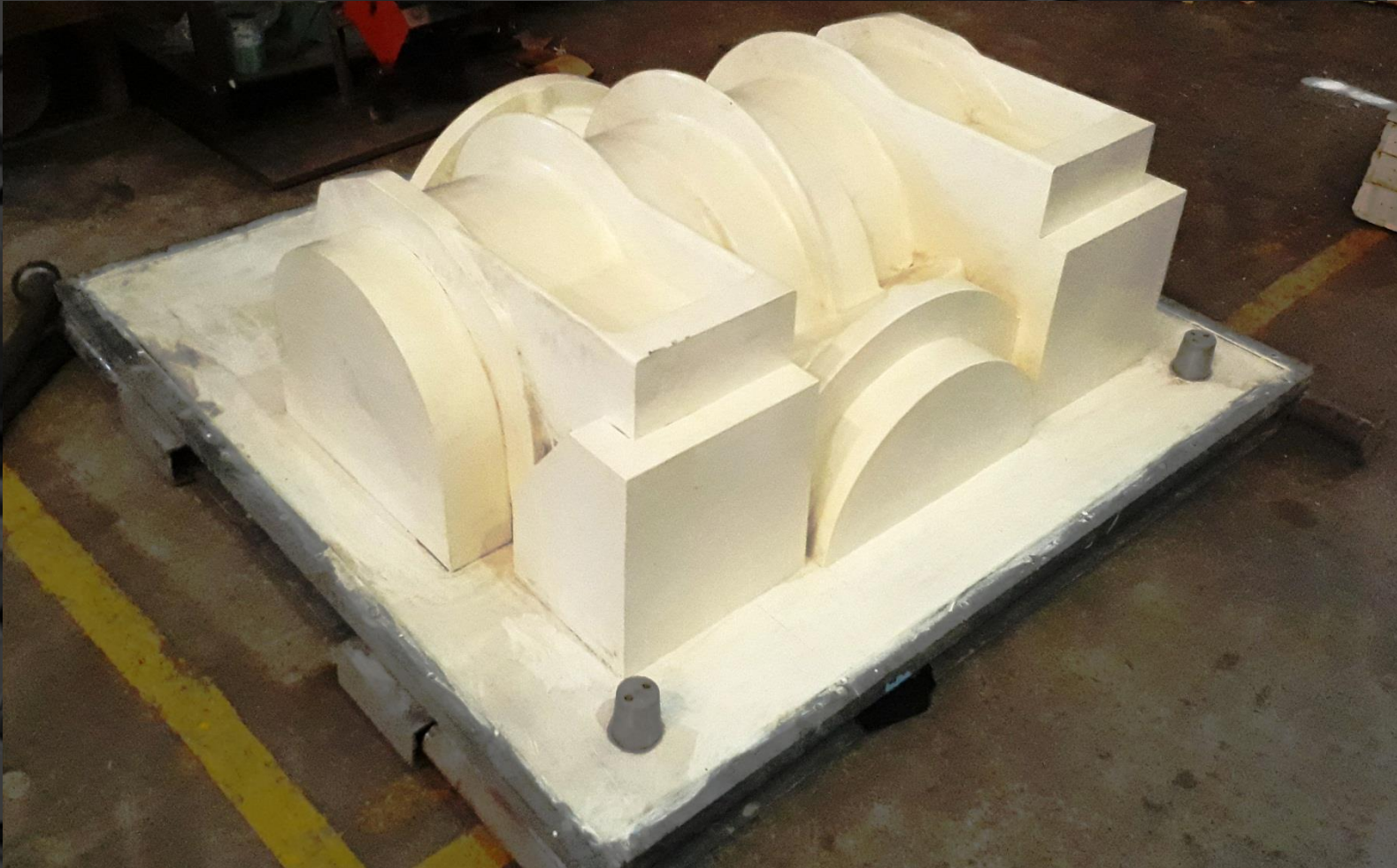
Some of the Manufactured Components



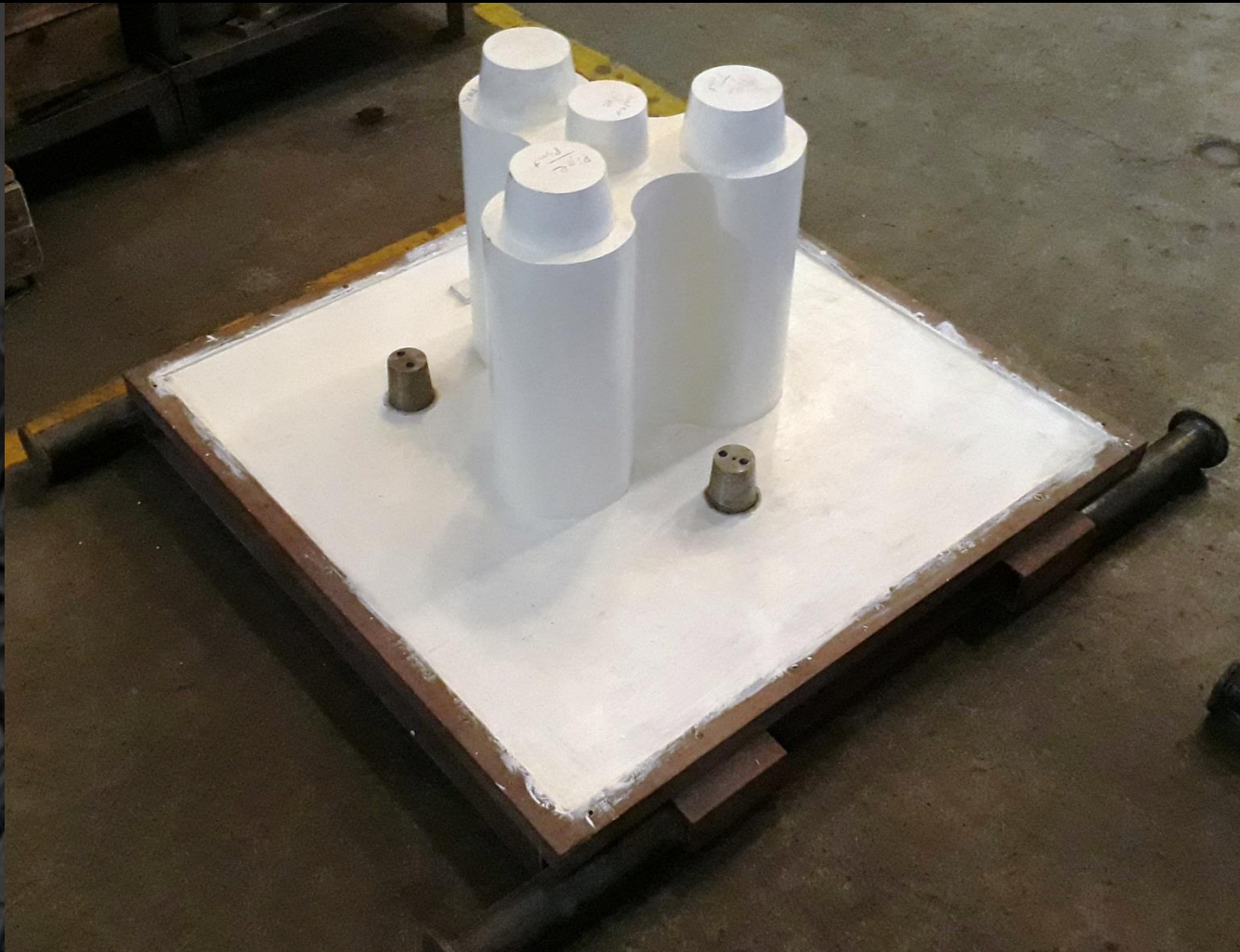
Some of the Manufactured Components



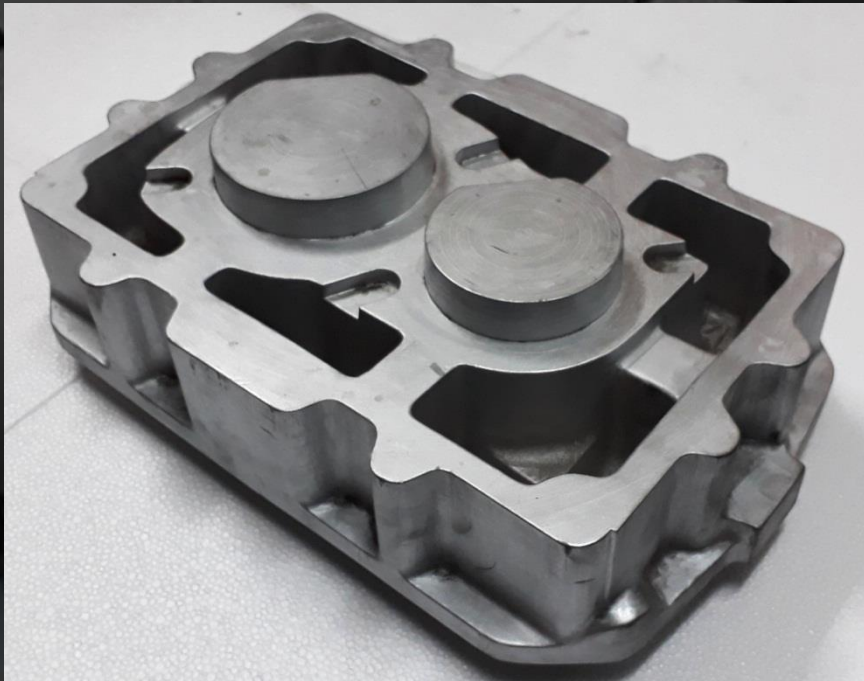
Some of the Manufactured Components



Pattern for the component for C I Casting of 1100 Kg



Pattern for the component for S G Iron Casting of 500 Kg



Aluminum Pattern for the component for C I Casting

Quality assurance



Quality assurance for Casting components manufacturing has three distinct phases in full compliance with ISO 9001 QMS (Latest Version).

1. Process Parameters are documented and operator training is monitored.
2. Visual inspection is performed by our trained machine operator on every part that is made the moment it comes out of the machine using the parameters and critical dimensions set by customer.
3. Parts are then randomly inspected once again by QA personnel at the machine once every hour and rejections are logged.
4. Finally the acceptable parts are boxed, counted, and moved to our quality control department, where they are randomly inspected once again and the count is verified. The parts are then ready for shipment.
5. Machine maintenance is done as per Preventative Maintenance Program.



Exterior View of Ahmedabad facility



Interior View of Ahmedabad facility



ITTI Contact for USA

In case of questions, please contact:

Ashok Thakkar ("Tucker")

President and CEO

ITTI, LLC

80, Old Sandhurst Landing, Johns Creek,
GA 30022 (USA)

Ph: +1 (678) 879 – 6379

E-mail ashok@ittillc.com

Web: www.ittillc.com



ITTI Contact for Canada

In case of questions, please contact:

Kamal Jain

VP – Business Development - Canada

ITTI, LLC

122, Bluebell Crescent

Ancaster, Ontario, Canada L9K 1G1

Ph: +1 (905) 512 - 5246

E-mail: kamal.jain@ittillc.com

Web: www.ittillc.com